

# nifty

# HR17 HYBRID 4x4

## SELF PROPELLED ACCESS PLATFORM



**17.00m (56ft)**  
Working height

**9.30m (31ft)**  
Unrestricted working  
outreach at 225kg

**Proportional  
Multi-Function Control**  
Fast & precise operation

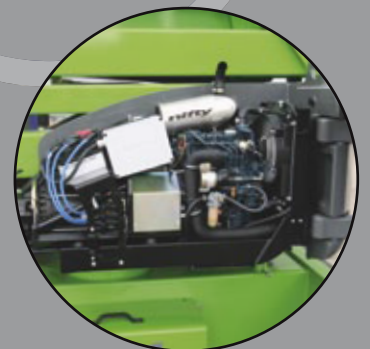
**GVW Only 4,750kg**  
Lowest weight in its class

**Superb Manoeuvrability**  
3.70m Turning Radius

**SiOPS® as Standard**  
Award winning  
operator protection

**Platform Rotation  
& Fly-Boom**  
Improved access to  
applications

**Hybrid Power**  
Versatile, fuel efficient &  
environmentally conscious



[niftylift.com.au](http://niftylift.com.au)



# nifty HR17 HYBRID 4x4

The **Height Rider 17 (HR17) Hybrid Four-Wheel-Drive (4x4)** is one of a new generation of environmentally conscious work platforms from Niftylift. Combining advanced power-source technology with efficient 4x4, it delivers outstanding performance from a compact and low-weight design.

On Diesel, the **HR17's** revolutionary **Hybrid** system can automatically utilise its electric motor to boost power whenever needed. This allows the **HR17 Hybrid 4x4** to operate with a smaller engine, reducing fuel consumption and its exhaust purification system then further reduces CO/NOx, particulates, and noise emissions.

The **HR17 Hybrid 4x4** can also operate on battery alone, making it ideal for indoor, quiet or clean applications. **Diesel Re-Gen** recharges the batteries without a mains power source and a fast charge is achieved whenever the machine is idle and the engine is left running.

## SAFETY FEATURES

- SiOPS®
- Automatic Fail-Safe Brakes
- Tilt Alarm
- Solid Tyres
- Powered Auxiliary Descent
- Manual Recovery with Hand Pump
- Dual Controls (Platform & Base)
- Lock Valves on all Hydraulic Cylinders
- Dual Harness Points
- CE Mark



The **HR17 Hybrid 4x4** also incorporates **ToughCage** and **SiOPS®** technologies. A tough impact resistant composite base and larger cross-section steel give the **ToughCage** strength and durability, while **SiOPS®** offers additional operator protection.

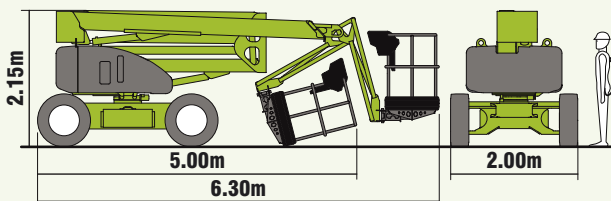
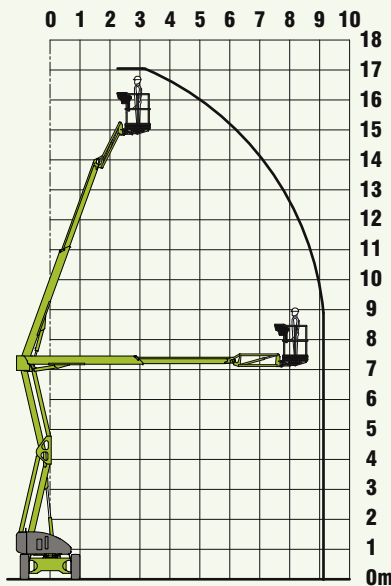


## SPECIFICATIONS

<b>Working Height</b>	17.00m	56ft
<b>Platform Height</b>	15.00m	49ft 6in
<b>Working Outreach</b>	9.30m	31ft
<b>Slew</b>	360°	
<b>Fly-Boom Arc</b>	150°	
<b>Width</b>	2.00m	6ft 7in
<b>Height</b>	2.15m	7ft
<b>Length - Stowed</b>	5.00m	16ft 5in
<b>- Overall</b>	6.30m	20ft 8in
<b>Minimum Weight</b>	4,750kg*	10,500lbs*
<b>Turning Radius - Outside</b>	3.70m	12ft 2in
<b>Platform Rotation</b>	100°	
<b>Platform Capacity</b>	225kg	500lbs
<b>Platform Size</b>	1.80m x 0.85m	5ft 11in x 2ft 9in
<b>Drive Speed - 4x4</b>	5.5kmph	3.4mph
<b>Gradeability</b>	40% (22°)	
<b>Hybrid Power System</b>	Battery & Diesel (Kubota 722 - 18Hp/14kW)	

\* Weights may vary according to specification, please confirm before ordering.

Due to a policy of continuing development and improvement, Niftylift reserves the right to change any specification without notice. Please confirm exact specification before ordering.



Supplied by:

Manufacturers of trailer mounted,  
self propelled and vehicle mounted platforms.

**NIFTY PTY LTD**  
11 Kennington Dr  
Tomago  
NSW 2322  
Australia

[www.niftylift.com.au](http://www.niftylift.com.au)

e-mail: [jking@niftylift.com.au](mailto:jking@niftylift.com.au)

Tel.: +61 2 4964 9765

Fax.: +61 2 4964 9710

